

OFFICIAL 2016 - 2017 GUIDE

# GATLINBURG ATTRACTIONS

WHERE GREAT ADVENTURES  
ARE WAITING TO BE DISCOVERED



AQUARIUM



AERIAL  
TRAMWAY



MOTION RIDES



LIVE THEATER



ARCADES

MINI GOLF



OUTDOOR  
THRILLS



SPOOKY PLACES

RAFTING



SCENIC  
VIEWS



MUSEUMS

GATLINBURG • TENNESSEE  
[www.attractions-gatlinburg.com](http://www.attractions-gatlinburg.com)

**Welcome to Gatlinburg** – there's no place in the world quite like it. Offering exciting adventures at every turn, our mountain village has a special attraction for everyone . . . and all within easy walking distance. With so much to do, why not stay awhile and see it all. There are hundreds of hotels, motels, chalets and restaurants available. **Have the time of your life in Gatlinburg.**

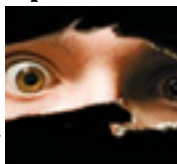
## CONTENTS

Refer to the map of Gatlinburg on page 28 & 29 for the location of each attraction.

### A Live Escape Experience Arcadia

#### PAGE 45 The Captured

A live horror-themed series of Escape Game Experiences. **112 Reagan Dr. (865) 430-7844 Map #21**



### Amazing Mirror Maze

You won't believe your eyes when you experience the exhilarating state-of-the-art light and sound show. **919 Parkway (Light #8). (865) 436-4415. Map #28**



### America's Escape Game

It's Sherlock Holmes meets Live Video Games! Use your inner genius to find your escape. **716 Parkway (at Fort Fun) (865) 436-2326 Map #15**



Arts & Crafts Community	50
Cable Channel 192TV	12
Gatlinburg Convention Center	36
Gatlinburg Golf Course	42
Great Smoky Mountains National Park	26
Map of Gatlinburg	28
New Gatlinburg app	42
Rocky Top Sports World	24
Special Events	30
Trolley System	6
Tunes & Tales	50
Winterfest	20

#### PAGE 41

A 25,000 square foot Fun Center for the whole family with the area's biggest redemption center. Prizes, Prizes, Prizes! **115 Historic Nature Trail (Airport Road). (865) 436-5650. Map #23**



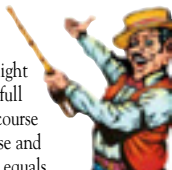
### Christ Museum & Gardens

An inspiring portrayal of the life of Christ. Over 100 life-sized wax figures and a collection of priceless coins & gems. **510 River Road. (865) 436-5155 Map #19**



### Circus Golf

In Blacklight 3D - the full 18-hole course is 1/2 Circus Funhouse and 1/2 Mini-Golf which equals 100% fun! **919 Parkway (Light #8). (865) 436-4415. Map #28**



### Cooter's Place

Cooter's "Dukes of Hazzard" Museum plus indoor slick track and 18 hole mini-golf. Regular appearances by Ben "Cooter" Jones and other "Dukes" cast members. **542 Parkway (between lights #3 & #5). (865) 430-9909. Map #6**



## CONTENTS

Refer to the map of Gatlinburg on page 28 & 29 for the location of each attraction.

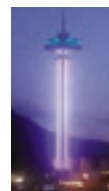
### Earthquake The Ride

A real live-action ride aboard an out-of-control subway car, complete with sights, sounds, motion and live action destruction. **653 Parkway. (865) 436-9765. Map #11**



### Gatlinburg Space Needle

407 foot observation tower plus Arcadia, a 25,000 square foot Fun Center for the whole family. Relax and Enjoy! **115 Historic Nature Trail. (865) 436-4629. Map #22**



### Fannie Farkle's

Play the Arcade and Redemption games. Clean restrooms, helpful service. Browse through the wide selection of prizes and taste the famous Ogle Dog, Sausage and Cheese Steak Subs and other fine food and beverages. **656 Parkway. (865) 436-4057. Map #12**



### Guinness World of Records® Museum

Exhibits of astounding achievements and events from the famous pages of the Guinness Book of World Records. **Baskins Square Mall on the Parkway. (865) 430-7800. Map #9**



### Fort Fun

It's all new fun . . . at Fort Fun! The area's hottest attraction with Laser Tag, Electric Bumper Cars, Gem Mining and more. Great Family Value! **Reagan Terrace Mall on the Parkway. (865) 436-BEAM. Map #15**



### Hillbilly Golf

Ride the incline rail car ride to mountaintop with two 18-hole miniature golf courses filled with unusual mountaineer hazards. **On the Parkway at traffic light #2. (865) 436-7470. Map #2**



### Gatlinburg Sky Lift

Chairlift ride in the center of town for a spectacular view of Gatlinburg and the Great Smoky Mountains. **On the Parkway at Maple Lane (between traffic lights #6 and #8). (865) 436-4307. Map #17**



### Hollywood Star Cars Museum

Featuring the best of Hollywood movies, TV and music superstars. View the world's best star car collection up close! **914 Parkway. (865) 430-2200. Map #27**



Contents continued on page 4.





# CONTENTS

Refer to the map of Gatlinburg on page 28 & 29 for the location of each attraction.

## Iris Theater

**PAGE 38** Now home to the critically acclaimed show *Impossibilities - Magic, Mindreading and Mayhem*. **115 Historic Nature Trail at the Space Needle - Light #8.** (888) 482-3330. Map #23



## Motion Ride Theater

**PAGE 36** Simulation at its best, where you ride the movies and your wildest dreams and nightmares come true. Six great movies experience, if you dare. **Reagan Terrace Mall on the Parkway.** (865) 430-8985. Map #16



## Mysterious Mansion

**PAGE 37** Join us and release your screams at Gatlinburg's oldest and scariest haunted house...**IF YOU DARE!** We'll be waiting for you in the shadows! **424 River Road.** (865) 436-7007. Map #18



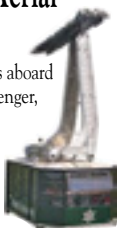
## Ober Gatlinburg

**PAGE 15** Year-round amusement park and ski resort with a mountain full of fun. **Take the Tram from the Parkway or by car via Ski Mountain Road.** (865) 436-5423. Map #30



## Ober Gatlinburg Aerial Tramway

**PAGE 8** Spectacular views aboard Gatlinburg's largest, 120 passenger, aerial tramway ride to the all seasons mountaintop recreation and amusement park. **1001 Parkway.** (865) 436-5423. Map #29



## Old Gatlinburg Golf & Games

**PAGE 48** Gatlinburg's largest indoor & outdoor mini golf attraction with three amazing courses to challenge your putting skills. **Reagan Terrace Mall on the Parkway.** (865) 430-GOLF. Map #14



## Rafting in the Smokies

**PAGE 40** One day here makes a lifetime of memories! From high in the treetops or down in the rapids, get ready for outdoor adventure! Enjoy family friendly rafting, ziplining, ropes challenge and more! **813 East Parkway. 800-PRO-RAFT (776-7238) Map #3**



## Ripley's Aquarium of the Smokies

**PAGE 7** One of the world's great aquariums. Features a moving walkway through a crystal-clear tunnel along the floor of a 750,000 gallon tank, surrounded by 12 foot sharks, stingrays, and thousands of exotic sea creatures. **On the Parkway at traffic light #5.** (865) 430-8808. Map #7



## Ripley's Believe It or Not! Odditorium

**PAGE 9** One of the world's most astonishing collections of curiosities and artifacts from around the globe. **On the Parkway just before Light #8.** (865) 436-5096. Map #20



## Ripley's Davy Crockett Mini Golf

**PAGE 35** Play and enjoy TWO exciting interactive miniature golf courses, but watch out for the critters! Free Parking. **On the Parkway at light #1.** (865) 430-8851. Map #1



## Ripley's Haunted Adventure

**PAGE 39** Your worst nightmares come to life at the ultimate scare in town. **On the Parkway at traffic light #8.** (865) 430-9991. Map #26



## Ripley's Marvelous Mirror Maze & Candy Factory

**PAGE 10** A fun and tasty adventure - a totally new concept in amusement design, it provides a different experience every time you enter. Plus, relive your childhood in the spectacular candy store. **On the Parkway (Light #6).** (865) 430-1834. Map #8



## Ripley's Penguin Playhouse

**PAGE 51** State-of-the-Art, Interactive African Black-footed Penguin Habitat. View penguins from above & below the water. **On the Parkway. (at Ripley's Aquarium of the Smokies).** (865) 430-8808. Map #7



## Ripley's Super Fun Zone

**PAGE 49** Quality Family Amusement with the most popular video games in the country. **On the Parkway just before Light #8.** (865) 436-5096. Map #20



## Smoky Mountain Outdoors

**PAGE 14** White Water Rafting at its finest. Just bring a change of clothes and get ready to get wet! **453 Brookside Village Way (Hwy. 321).** 1-877-212-4383 Map #4



## Sweet Fanny Adams Theatre

**PAGE 11** 40th SEASON - 2 hours of hilariously original musical fun at Gatlinburg's Top Evening Entertainment Attraction. The oldest professional theater in the Smokies. TWO all-new alternating shows each season. **461 Parkway at Traffic Light #3.** (865) 436-4039. Map #5



Contents continued on page 6

# CONTENTS

Refer to the map of Gatlinburg on page 28 & 29 for the location of each attraction.

## Ripley's Moving Theater

**PAGE 13** Real D - 5D technology puts you in the adventure. 2 action-packed films with dynamic special effects and surround sound. **904 Parkway.** (865) 436-9763. Map #25



# CONTENTS

Refer to the map of Gatlinburg on page 28 & 29 for the location of each attraction.

## Treasure Quest Golf

**PAGE 55** An ancient jungle temple is the backdrop to this adventure-packed championship 18-hole indoor miniature golf course filled with unusual and spectacular scenes. **653 Parkway. (865) 436-3972. Map #10**



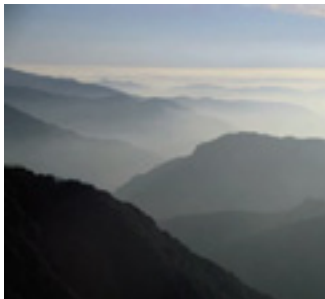
## World of Illusions

**PAGE 44** The world's largest exhibition of action-packed Grande Illusions. Make a friend disappear, walk away from your shadow, see a superman use x-ray vision and much, much more. **On the Parkway next to Reagan Terrace Mall. (865) 436-9701. Map #13**



## Zip Gatlinburg

**PAGE 18** Soar through the tree tops for the adventure of a lifetime - ziplines, sky bridges and more - fun for all ages. **125 Historic Nature Trail. (light #8). (865) 325-1515. Map #24**



# THE GATLINBURG TROLLEY SYSTEM



Hop aboard the Trolley - the fun and inexpensive way to see Gatlinburg! The color coded trolleys make frequent stops on regular routes throughout Gatlinburg, and connect

to Pigeon Forge and Sevierville as well. The map in the center of this guide shows the Gatlinburg routes.

Now take advantage of the new **All Day Trolley Pass** in Gatlinburg where, for only \$2.00 per day, you receive unlimited rides on the five most popular Gatlinburg routes (sorry, doesn't include the Pink or Tan routes). The **All Day Trolley Pass** can be purchased at both Gatlinburg Welcome Centers, Gatlinburg City Hall and at the front desks of numerous Gatlinburg lodging companies. To track Trolleys en route via GPS visit: [gatlinburgmasstransit.org](http://gatlinburgmasstransit.org)



# AMERICA'S #1 AQUARIUM

**OPEN 365 DAYS**

**Voted One of the Top 5 Aquariums in the USA & the World by TripAdvisor Travelers' Choice!**

**E**xplore the Amazing Aquatic World Up-Close! Marvel at 12-foot sharks, the giant sea turtle, thousands of exotic sea creatures and playful penguins swimming as you enjoy the State-of-the-Art Clear Underwater Tunnels throughout! **An Ultimate Underwater Experience** without being wet!

Explore the lush, unique and beautiful worlds of the **Tropical Rainforest**, **Ocean Realm**, **Coral Reef**, and **Gallery of the Seas**, and the **Best Shark Exhibit in the Most Spectacular Underwater Tunnel in Shark Lagoon**. Enjoy entertaining dive and feeding shows in **Coral Reef**, **Stingray Bay** and **Penguin Playhouse**. Pet horseshoe crabs and stingrays in the **Discovery Center** and **Touch-A-Ray Bay**. Enjoy playful penguins swimming, pop up on the penguins' private beach and get nose-to-beak in **Penguin Playhouse**, voted by USA Today Travel 10 Best List as one of the best places to see penguins in the world!

## Want a Unique Experience?

Experience **Sleeping With the Sharks**, **Behind the Scenes Tours**, **Educational Programs**, **Splashing With the Stingrays**, **Penguin Encounter** and **Painting programs!** **Fun-Filled family experience** and **MUCH, MUCH MORE!**



**Ripley's**  
**AQUARIUM**  
**OF THE SMOKIES®**  
© Ripley Entertainment Inc.

**888-240-1358**  
**On the Parkway**  
**at Traffic Light #5.**

[www.ripleysaquariumofthesmokies.com](http://www.ripleysaquariumofthesmokies.com)

email: [aquariumofthesmokies@ripleys.com](mailto:aquariumofthesmokies@ripleys.com)

**MAP LOCATION - #7**







# YOUR BEST TRIP STARTS HERE

## PANORAMA *Scenic* Excitement

**O**ber Gatlinburg is your destination for fun in the Smokies. From Downtown Gatlinburg, the 120 passenger Aerial Tramway transports you to the mountain resort where you'll find a full day's excitement. Spend your time on the **NEW Ski Mountain Coaster**, ice skating on the indoor rink, riding Alpine Slide, Scenic Chairlift, 3 water raft rides, kiddie rides, swing and Carousel.

Experience the **Wildlife Encounter** with bears, otters, bobcats and other native animals. In the winter you'll find the best and only snow skiing in Tennessee.

Unsurpassed vistas surround you on all sides as the tram takes you high above the trees to an elevation of 2,700 feet to the Ober Gatlinburg resort. The Aerial Tramway departs every 20 minutes, reaching a top speed of 23 mph and traveling a distance of 2.1 miles. The trip from the downtown station to mountain resort takes about 10 minutes.

*It's a trip you won't want to miss!*



(865) 436-5423

1001 Parkway  
www.obergatlinburg.com

MAP LOCATION - #29



# EXTREME FUN!

## ODDITIES Artifacts of the Strange

**T**here's always something new or undiscovered at Ripley's! **New Galleries, New Interactives and over 500 astonishing and unusual artifacts** collected from the far-corners of the world. All guaranteed real and mind-boggling. Join us for your challenge to simply . . . **Believe It or Not!**



**Ripley's**  
**Believe It or Not!**  
**ODDITORIUM®**

© Ripley Entertainment Inc.

(865) 436-5096

On the Parkway (Just before Light #8)  
www.ripleysgatlinburg.com  
Email: gatlinburg@ripleys.com  
Open year round.

MAP LOCATION - #20







## A FUN AND TASTY ADVENTURE MAZE & MORE *Amazing Surprises*

**T**he Marvelous Mirror Maze is not your grandparent's house of mirrors. A totally new concept in amusement design, it provides a different experience every time you enter. With sound, lighting effects and rotating mirrors to enhance the experience, the maze features 2,000 square feet of mirrored paths, surprising corners, dead ends and continuous circles. Take your time as you explore the endless hallways and hundreds of mirrors as you journey through the adventure. *Experience the Infinity Room to add to your adventure.*

Relive your childhood in The Candy Factory, a spectacular and colorful candy store with a splendiferous variety of candies of all kind – from old time favorites to new classics, all set in a fantasy candy factory atmosphere.

*With so many choices, it's never the same experience twice.*



**Ripley's**  
*Marvelous*  
**MIRROR MAZE**

**Ripley's**  
**CANDY FACTORY**

© Ripley Entertainment Inc.

**(865) 430-1834**  
On the Parkway (Light #6)  
next to Guinness World Records  
[www.ripleysgatlinburg.com](http://www.ripleysgatlinburg.com)  
Email: [gatlinburg@ripleys.com](mailto:gatlinburg@ripleys.com)  
Open Year Round.

MAP LOCATION – #8



**THEATRICAL LUNACY**  
Since 1977

*"Recognized as one of the most Innovative and Unusual Professional Theatre Companies in the Country."*

## TRY SOMETHING TOTALLY DIFFERENT TONIGHT!

## COMEDY



It's original shows are quick-witted sensations, filled with the broadest of humor and the silliest of slapstick, all *guaranteed to be like nothing else ever seen.* It's 2 hours of hilarious fun, lively music, top-notch performers and lots of audience participation!

**SHOWTIME 8 PM**

Monday - Saturday  
(schedule subject to change)

**H**ollywood has Mel Brooks, but Gatlinburg has Sweet Fanny Adams Theatre! Proclaimed a "National Historical Treasure", the theatre has premiered over 50 original musical comedy productions since opening in 1977.

**TWO New Comedy Shows** are presented on alternating nights throughout the season.

PAT & DON  
MACPHERSON'S  
**Sweet Fanny Adams Theatre**

*The Oldest and Most Unusual Theatre in the Smokies!*

**(865) 436-4039**

461 Parkway (at traffic light #3)  
Group Rates & Convenient Parking Available.  
[www.sweetfannyadams.com](http://www.sweetfannyadams.com)

MAP LOCATION – #5



CELEBRATING **40** YEARS IN GATLINBURG!

# INTERACTIVE BLACKLIGHT GOLF CIRCUS GOLF

**T**his full 18-hole course is 1/2 *Circus Funhouse* and 1/2 *Mini-Golf* which equals **100% fun!** Inside this action packed indoor circus adventure you'll be amazed by interactive features, computer animations, animatronic characters and custom sound effects. Make sure to hit a hole-in-one on the 18th hole for a special celebration song the whole family will love!



(865) 436-4415  
919 Parkway (Light #8)  
Open year round.

MAP LOCATION - #28



**A**fter you get settled into your home-away-from-home, check out cable channel 192 and find out what to do next! From shopping and dining options to attractions and special events, Gatlinburg's exclusive Visitor Information Channel is fast-paced and full of information. WGAT Cable Channel 192 is throughout Sevier County. Follow WGAT online at [www.gatlinburg.com/tv192](http://www.gatlinburg.com/tv192)



## CUTTING EDGE REAL D - 5D TECHNOLOGY THRILL RIDE See It! Feel It!

**E**xperience the thrills! Ride the movies! Cutting edge REAL D (the new 5D) digital technology - the same 5D magic used in *Home*, *Minions* and *Jurassic World* - make it the most exciting movie there is!

Ride the 5D simulator and experience every bump, dip and turn! Feel the rush and thrills of TWO New Fun-filled, Action-packed Films with continuous showings year round.



© Ripley Entertainment Inc.

(865) 436-9763

On the Parkway at Light #8  
Located next to Ripley's Haunted Adventure

[www.ripleysgatlinburg.com](http://www.ripleysgatlinburg.com)  
Email: [gatlinburg@ripleys.com](mailto:gatlinburg@ripleys.com)

MAP LOCATION - #25







# FUN FOR THE WHOLE FAMILY

## WHITE WATER Rafting at its *Finest*

**G**et your adventure on with the leading outfitter on the Pigeon River. Smoky Mountain Outdoors has been providing outstanding outdoor experiences since 1993. Our Raft Guides are River Professionals who will make sure your trip is safe, enjoyable, and the highlight of your vacation. Just bring a change of clothes and get ready to get wet!

The Pigeon is one of the most popular rafting rivers in the US. On a scale of 1 to 5, with 5 being the roughest, The Upper Section is exciting Class 3 and 4 Whitewater.

- At 6.5 miles, ours is the longest white-water trip on the river
- Classic Whitewater Rafts (age 8 and up)
- "Go For It" Small Raft options (age 12 and up)

The Lower Section is Class 1 and 2 Calm Water.

- 5.5 miles of beautiful mountain scenery
- Perfect for nature lovers who want a more laid-back trip or
- Families with younger kids (age 3 and up)
- Give it a try: paddle-your-own super-stable inflatable kayak!

### Want to explore some more?

Ask about our Guided Hikes and Adventure Packages. With over half a million acres and 800 miles of hiking trails in the Great Smoky Mountains National Park, let us help you make the most of your time.

Come out and play. And . . .

*Don't Worry Mom! We're Gonna Take Good Care of You and The Kids!™*



877-212-4383

Reservation Office:

453 Brookside Village Way

Call or check our website for directions  
to our riverside outpost -  
only 45 minutes from Gatlinburg

Reservations Recommended

[www.smokymountainrafting.com](http://www.smokymountainrafting.com)

#GowithSMO

MAP LOCATION - #4



## YEAR ROUND FAMILY FUN

# OVER GATLINBURG

*There's always something new at Ober Gatlinburg.*

**O**ber Gatlinburg is a year-round amusement park and ski resort with something exciting for everyone. Experience the thrill of a lifetime and coast down the **NEW Ski Mountain Coaster**, slide down the 1800 foot twin track Alpine Slide or relax as the Chairlift takes you to awe-inspiring views and spectacular photo opportunities of the Smoky Mountains.

Ice skate in any season at the massive climate-controlled indoor arena.

Other activities include: Outdoor Maze, Water Raft Rides, Carousel, Kiddie Land, Restaurant / Lounge and much more!

The **Wildlife Encounter** provides an opportunity to see bobcats, river otters, birds of prey, a nocturnal house with native wildlife, and the Black Bear Habitat. Come to see a close up view of one of the Smokies' most revered animals.

In the winter, ski and snowboard on ten fabulous trails designed for beginners to experts or experience the exhilaration of tubing down a snow covered lane in the 400 foot long Tubing Park.

Take the Aerial Tram from Downtown Gatlinburg to a mountain of fun!



(865) 436-5423

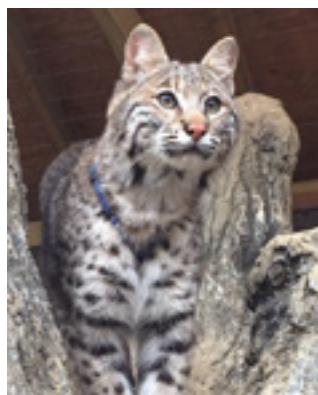
[www.obergatlinburg.com](http://www.obergatlinburg.com)

Tram station located at

1001 Parkway

Ober Gatlinburg reached by Aerial  
Tram or via Ski Mountain Road  
at Traffic Light #10

MAP LOCATION - #30

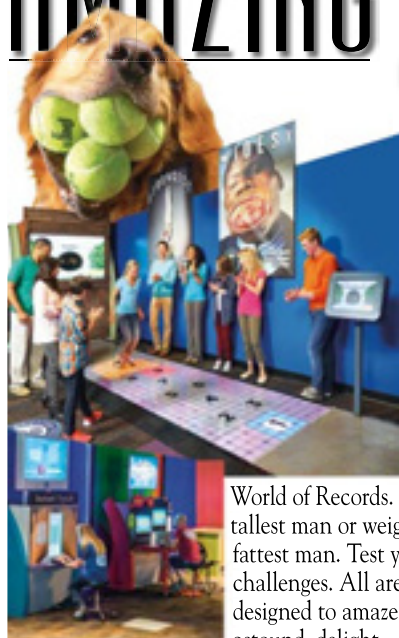






# WORLD RECORDS BOOK COMES TO LIFE

## AMAZING Exhibits to Captivate



and enlighten. Everything you see has really happened.

The Guinness World of Records Museum features hundreds of astounding exhibits from the famous Guinness Book of World Records and the Guinness Prime-time TV Show. There's an incredible line-up of feats, facts and records in an amazing display of unparalleled fun.

Dramatic recreations come to life at the all new and expanded edition of Guinness

World of Records. Compare your height to the tallest man or weigh yourself against the world's fattest man. Test your skills with new interactive challenges. All are designed to amaze, astound, delight



(865) 430-7800

On the Parkway  
at Baskins Square Mall in the Center  
of Gatlinburg's Shopping District  
Open daily, 9 am - 11 pm

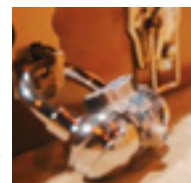
[www.ripleysgatlinburg.com](http://www.ripleysgatlinburg.com)

MAP LOCATION - #9



## OPENING SUMMER 2016!

# ESCAPE GAMES



Come experience the most fun and immersive experience you will have in Gatlinburg! Your team is locked in a themed-out room for one hour with the goal of escaping. Solve riddles, puzzles, and complete physical challenges to earn what few have done: ESCAPE. Use your intuition, your problem solving, and your own inner genius to uncover the secret clues to successfully get out!

**Warning: Most Do NOT Escape!**

Great For:

- Gamers
- Team Building
- Adventure Seekers



**Moonshine Hill** - There is a deep blood feud 'round these parts that has been going on for years, and it all centers on a secret moonshine recipe developed by Maw. Work with Paw and your teammates to discover that secret formula and escape before Maw and the kin folk find out!

*More Escapes to be added soon! Check out our website for exciting announcements.*

(865) 436-2326

716 Parkway

at Reagan Terrace Mall at

**FORT FUN**

Requests@smokymountainfun.com

Check out our website:

[www.fortfungatlinburg.com](http://www.fortfungatlinburg.com)

and soon to be online:

[www.gatlinburgescaperoom.com](http://www.gatlinburgescaperoom.com)

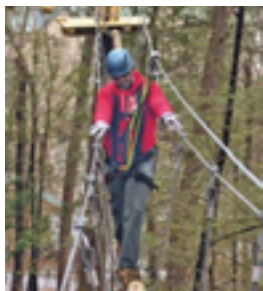
MAP LOCATION - #15







## SOARING FUN FOR THE WHOLE FAMILY! ZIP GATLINBURG



**A**merica's most popular zipline is right here in downtown Gatlinburg. And, it's also the most inexpensive and one of the safest state certified ziplines in Tennessee. Enjoy a treetop canopy tour overlooking the buildings of downtown Gatlinburg while zipping through the beauty and wildlife of the National Park.

Zipgatlincburg's guided treetop canopy tour offers a unique, memorable experience with 9 treetop ziplines plus an optional 27 element TreeTrek course. Zipgatlincburg is the ONLY zipline tour that specializes in giving kids 5 years

old to grandparents a safe, fun and not too frightening experience. Great for beginners, kids, and folks afraid of heights! **No experience needed.** NO HANDBRAKING. Trained certified guides will be doing all that for you and are with you every step of the way. It's not too high, not too long and not too scary. **AND NOT TOO EXPENSIVE . . .** the best price for a true treetop canopy tour, one of only a few left in Sevier County.

And for another great treetop challenge, you can enjoy our 27 element TreeTrek that is self-guided with experienced guides coaching from the ground. Ever go parking 60 feet up? You can at this TreeTrek. Have your picture taken sitting in the yellow Corvette overlooking Gatlinburg. You will traverse a picnic table, bridges, logs, ladders, trapezes, all while safely harnessed in the trees.

Combine the TreeTrek with the 9 zipline course and save even more and have a memorable time in Gatlinburg. Our Check-In Center is next door to the Space Needle - where your adventure begins. Vans take you through downtown Gatlinburg with some of the most fun loving guides you will ever meet!

Night and private tours are available. Walk-ins welcome but advanced reservations recommended. Group rates available.



**(865) 325-1515**

**Toll free: 877-430-9442**

**125 Historic Nature Trail**  
at traffic light #8

next to the Space Needle

Email: [bookit@zipgatlincburg.com](mailto:bookit@zipgatlincburg.com)

[www.zipgatlincburg.com](http://www.zipgatlincburg.com)

9 am - 10 pm Year Round

MAP LOCATION - #24

## MUSEUM & FUN-TIME PLACE COOTER'S The Dukes of Hazzard!



**Y**'all come on in and make yourselves at home in Hazzard County. Visit the *Dukes of Hazzard Museum & Shop*, free of charge, and enjoy Cooter's fabulous collection of Props, Costumes, and Memorabilia from the "Dukes". Be sure to visit often so as not to miss *regular appearances by Ben "Cooter" Jones and other cast members.*

There's even more great family fun at Cooter's Place.

Race the "General Lee" at Gatlinburg's only

INDOOR slick track for 40 laps at speeds up to 23 mph in Go-Karts equipped with the finest safety features. Play 18 holes of miniature golf at the Hazzard Country Club with a trip down the "Dukes" memory lane.

*"Forget Graceland. The newest Southern-fried pop cultural mecca? Cooter's, a shrine to the 80's good ol' boy hit Dukes of Hazzard. Fans of the show flock to see such relics as original scripts, costumes, and, of course, the 1969 orange Dodge Charger known as the General Lee."*

— Entertainment Weekly



**(865) 430-9909**

Phone for information, group sales and family vacation packages

**542 Parkway**  
between Traffic Lights #3 & #5  
across from Ripley's Aquarium.

Open 9 am Daily.

[www.cootersplace.com](http://www.cootersplace.com)

MAP LOCATION - #6







The Gatlinburg Welcome Center, located on Highway 441 just north of town, is also home to a unique store that features only products that are **Made in Gatlinburg**. Represented by over sixty businesses, you can select that perfect Gatlinburg souvenir to take home, or use the store as an introduction to the shops that you'll want to learn more about! Open daily except Christmas day.



*Just the thing to put you in the winter spirit. Winterfest! – the magical celebration of lights and special events kicks off the winter season from mid-November through February. Gatlinburg Winter Magic is the highlight of the entire Winterfest season. The city transforms into a Winter Wonderland of 3 million LED animated twinkling lights as far as the eye can see. For this special season only, Gatlinburg offers a magical Trolley Tour of Lights. Also, on December 2, the **Gatlinburg Fantasy of Lights Christmas Parade** will step off for its 41st year, where hundreds of thousands of lights roll down the Parkway on elaborately decorated floats in the South's oldest night-time parade.*



## THE ORIGINAL - OFTEN COPIED, NEVER DUPLICATED

# GAMES Food and FUN!



Come experience **Great Food and Merriment!** Experience a uniquely original concept in food and entertainment at Fannie Farkle's Family Fun Parlor! It's **THE** fun place to visit in Gatlinburg. Famous since 1981, their homemade Ogle Dogs are the ultimate footlong corn dog.

Watch them made while you wait for yours! They also serve their Famous Sausage Subs, Cheese Steak Subs and Hawaiian Shaved Ice. Your taste buds will water every time you pass by! Stop in and stay awhile.

The Amusement Center is full of games for the entire family. Our **NEW ELECTRONIC Game Card** eliminates quarters and paper tickets. Use it to purchase food, play games and store your electronic points. Redeem your points for the Best Prizes in Town! ATM is available.

Not enough points yet? Don't worry – **your points NEVER expire at Fannie Farkle's Family Fun Parlor!**



**(865) 436-4057**

**656 Parkway**

(Located between traffic lights #6 & #8)

Open 365 days a year

8 am until late in the evening

**www.fanniefarkles.net**

MAP LOCATION – #12

**Come for the Food!  
Stay for the Fun!**



# VIEW THE WORLD'S BEST CAR COLLECTION UP-CLOSE!

## STAR CARS MUSEUM

### Where the Cars are Stars!

OVER 40 VEHICLES FROM YOUR FAVORITE SHOWS & MOVIES

In the center of Gatlinburg, the Hollywood Star Cars Museum is home to 40 authentic vehicles featuring the best of Hollywood movie, TV and real life music superstar cars displayed in scenes you will always remember. A tour through Star Cars Museum is a trip through some of the most famous movies and TV shows of the last 50 years.

Many of the cars are the creations of George Barris, who has created more famous Hollywood movie and TV cars than anyone. On display are some of his finest creations, such as TV's most popular car, the 1966 TV show *Batmobile*. Our exhibits



range from such blockbuster hit movies as *Batman Returns*, *Gone in 60 Seconds*, *Charlie's Angels*, *The Fast and the Furious* movie series to some of TV's most memorable shows: *NCIS*, *They Beverly Hillbillies*, *Andy Griffith* and *The Munsters*.

The collection is also home to personal vehicles owned by entertainment icons Elvis Presley, the Beach Boys, Bob Hope, Dolly Parton and Sir Paul McCartney.



(865) 430-2200

914 Parkway

Located next to the Convention Center near traffic light #8.

Open 7 days a week from 9 am - 10 pm.

An average tour takes about an hour.

[www.starcarstn.com](http://www.starcarstn.com)

MAP LOCATION - #27



## HEART-POUNDING ADVENTURE RIDE

# ACTION

### Earthquake Subway Ride



Your train awaits.

Once strapped into your seat, hold on for the ride of your life. It's an earthquake. As the car moves out of the station, there's another train on the track bearing down on you. Sidewalks buckle. Ceilings cave-in. The track gives-way and sinks into the ground.

The quake intensifies. Sirens scream and walls collapse. Just as you think it's over, you are surprised by a flood of water. It's truly a high-tech Action Adventure for all ages.

# EARTHQUAKE

## THE RIDE

(865) 436-9765

653 Parkway

In the center of town, next to the Gift Warehouse.

MAP LOCATION -#11



[www.attractions-gatlinburg.com](http://www.attractions-gatlinburg.com)





**WE INVITE YOU TO . . .**

## Compete at a HIGHER Level

**R**ocky Top Sports World is the country's premier tournament destination for youth and amateur sports. The state-of-the-art facility offers a world class venue for state, regional and national events.

Located on Hwy. 321 only minutes from downtown:

- 7 Outdoor fields (6 with synthetic turf)
- 10 Hardwood Basketball Courts On Site
- Championship Stadium
- 86,000 square foot Indoor Facility
- Team rooms
- Champs Grill
- Ample Parking and Trolley Service



Rocky Top Sports World promises to deliver a one-of-a-kind sports destination experience. *To find out more about tournaments, camps, parties and special events, please visit:*

**[www.RockyTopSportsWorld.com](http://www.RockyTopSportsWorld.com) or call 865.325.0044**

**1870 Sports World Blvd., Gatlinburg, TN 37738**



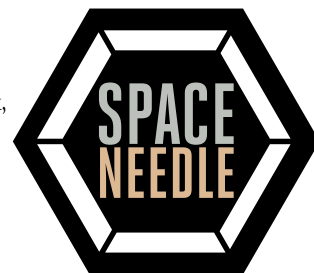
## GATLINBURG'S PREMIER LANDMARK ATTRACTION

# VISTAS

## Your Front Row Seat To The Smokies!



**R**ide the glass elevators over 400 feet with our host attendant and step out to a breathtaking 360 degree view of the Smokies by day or Downtown Gatlinburg's lights by night. Enjoy historical educational markers from the Gatlinburg Space Needle's perspective. Includes free view finders and benches to relax and take in the scenery.



If it's live entertainment you seek, look no further than the Space Needle's **IRIS Theater** - host to **Impossibilities**, the areas newest show! At the Space Needle complex you can also dine at **Slice Pizza Bakery and Play, Win, Eat** all day at Arcadia!

Bring in the New Year with thousands at downtown Gatlinburg's New Year's Eve Ball Drop and Pyrotechnics Show on December 31st at the Gatlinburg Space Needle.

**(865) 436-4629**

**115 Historic Nature Trail**  
at Traffic Light #8 across from the Convention Center  
**[www.gatlinburgspaceneedle.com](http://www.gatlinburgspaceneedle.com)**

*For a sneak peek, try out our website's controllable webcam.*

MAP LOCATION - #22





# G R E A T S M O K Y M O U N T A I N S N A T I O N A L P A R K



so big, scientists are still discovering some of the plant and animal species that live there.

The park is home to more than 1,500 bears so keep your eyes open when hiking the Smoky Mountain trails.

Nothing beats seeing a bear in the park, and there are plenty of other breathtaking sights here in the Smoky

Mountains – waterfalls, winding valleys and century-old architecture.

Take a drive and feel your heart come alive. Early explorers may have had some of the first glimpses of the beauty of the Smoky Mountains, but only after many weeks of difficult bushwhacking across treacherous terrain. Fortunately for today's visitors, Great Smoky Mountain National Park has paved the way (literally) for easy viewing of the Smokies' most prominent features and stunning views.



The Cherokee people called this the “Place of Blue Smoke”, for the lovely bluish mist from which the mountain tops rise. Today, it's the most visited National Park in the United States. It's



There's no wrong way to take in the extraordinary beauty of the Smoky Mountains, but to catch the close-up grandeur of Smoky Mountain waterfalls and endless forests means lacing up your hiking boots. Some of the most scenic hiking trails in Tennessee are found right here, winding through wildlife habitats and old-growth forests to the area's most popular sights.

Few experiences in nature are more rewarding than taking in the sights and sounds of a hike and knowing that majestic waterfalls and awe-inspiring vistas await you at the end.

Vacations are all about escaping the everyday, and nothing will remind you of that more quickly than spotting a bear or elk in the Smokies. Because Great Smoky Mountain National Park is a thriving black bear habitat, chances are good you'll catch a sight of these magnificent creatures, along with an incredibly diverse population of plant and animal species.



Who were some of the first settlers in the region? What did the first Smoky Mountain cabins look like? What was it like to go to school in the 1800s in Appalachia? Learn all there is to know about Gatlinburg and the Smokies at these eastern Tennessee historical sites. History and culture lessons abound in the old homesteads, mills and schoolhouses that remain in the Smoky Mountains.

Gatlinburg is home to many scenic and accessible spots perfect for bringing back the lost joy of picnicking. Admire the antique architecture of century-old cabins and mills at Cades Cove picnic area, soak up the scenery of the Little Pigeon River at the Chimneys picnic area or share a meal at one of several other designated picnic spots in and near Gatlinburg.

For more information visit: [www.nps.gov/grsm](http://www.nps.gov/grsm)





# GATLINBURG

WHERE GREAT ADVENTURES ARE WAITING TO BE DISCOVERED

- RIVER ROAD TROLLEY
- PARKWAY TROLLEY
- ARTS & CRAFTS TROLLEY
- NATIONAL PARK TROLLEY
- DOLLYWOOD TROLLEY
- CITY HALL TROLLEY
- WELCOME CENTER TROLLEY
- TRAFFIC LIGHTS
- MEDICAL FACILITY
- PUBLIC RESTROOMS
- PARKING



MAP NUMBER	ATTRACTION	PAGE NUMBER
1	Ripley's Davy Crockett Mini Golf	35
2	Hillbilly Golf	53
3	Rafting In The Smokies	40
4	Smoky Mountain Outdoors Whitewater Rafting	14
5	Sweet Fanny Adams Theatre	11
6	Cooter's	19
7	Ripley's Aquarium of the Smokies	7
7	Ripley's Penguin Playhouse	51
8	Ripley's Mirror Maze & Candy Factory	10
9	Guinness World Records Museum	16
10	Treasure Quest Golf	55
11	Earthquake The Ride	23
12	Fannie Farkle's	21
13	World of Illusions	44
14	Old Gatlinburg Golf & Games	48
15	Fort Fun	46
15	America's Escape Game	17
16	Motion Ride Theater	36
17	Gatlinburg Sky Lift	43
18	Mysterious Mansion	37
19	Christ Museum & Gardens	52
20	Ripley's Believe It or Not! Odditorium	9
20	Ripley's Super Fun Zone	49
21	A Live Escape Experience - The Captured	45
22	Gatlinburg Space Needle	25
23	Arcadia	41
23	Iris Theater	38
24	Zip Gatlinburg	18
25	Ripley's Moving Theater	13
26	Ripley's Haunted Adventure	39
27	Hollywood Star Cars Museum	22
28	Circus Golf	12
28	Amazing Mirror Maze	47
29	Ober Gatlinburg Aerial Tramway	8
30	Ober Gatlinburg	15



# GATLINBURG SPECIAL EVENTS

2016



**June 1 - December 31**  
**40th Season Celebration at Sweet Fanny Adams Theatre** – Celebrate 40 hilarious years in Gatlinburg with the oldest continuously operating professional theater company in East Tennessee; 2 New Original Shows plus a Special Holiday Show. Showtime is 8 p.m. Call for reservations: 865-436-4039 or visit [www.sweetfannyadams.com](http://www.sweetfannyadams.com)

**June 1 - 7**  
**Gatlinburg Smoky Mountain Spring** – As part of Smoky Mountain Springfest, June is jam packed with special events and activities for the whole family! For more information on Gatlinburg Smoky Mountain Spring: It's a Spring Thing.

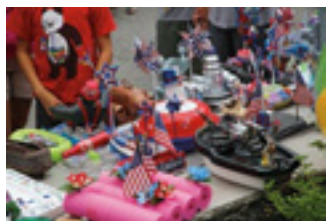
**June 4 - September 10**  
**Gatlinburg Farmers Market** – Offering local choices for healthy mountain living, the Farmers Market is open Saturdays from 8:30 a.m. to 12:00p.m. in the Great Smoky Arts & Crafts Community at the Covered Bridge, 849 Glades Road. Visit [www.gatlinburgfarmersmarket.com](http://www.gatlinburgfarmersmarket.com) for details.



**June 10 - July 31**  
**Smoky Mountain Tunes and Tales** – All summer long visitors can meet characters, hear mountain music and learn about life long ago in the Smokies on the streets of Gatlinburg. Storytellers, musicians and cloggers perform along the Parkway every evening during this ninth annual event!

**June 17 - August 20**  
**Free Parkway Trolley** – The City of Gatlinburg will offer free trolley service to patrons along the length of the Parkway for nine weeks this summer. The free specially painted open-air shuttles will operate from 10 a.m. to 10 p.m. daily through Mid-August. Extra stops have been established between traffic lights 1 and 10 along Parkway.

**July 3**  
**4th of July Midnight Parade** – This 41st annual showcase salutes the valiant men and women of our military services in the "First July Fourth Parade in the Nation!" Parade starts at the stroke of midnight to begin Independence Day. Floats, balloons, and marching bands pay tribute to our country during this Southeast Tourism Society Top 20 Event.



**July 4**  
**River Raft Regatta** – Visitors can enjoy a fun, unmanned, floatable object race for the whole family. Free registration begins at 10 a.m. at bridge beneath chair lift on River Road. Race begins at noon at Christ of the Smokies bridge and ends at Ripley's Aquarium of the Smokies bridge where prizes will be awarded in several different categories.

**July 4**  
**4th of July Fireworks Show** – Join the celebration in downtown Gatlinburg to mark our nation's "Independence Day" with a magnificent fireworks show. The City of Gatlinburg lights up the mountain skyline downtown at 10 p.m. with this grand display. Designated a Top 20 event by Southeast Tourism Society.



**July 14 - 17**  
**Gatlinburg Craftsmen's Fair** – Art, crafts and music lovers will discover over 200 booths featuring some of the nation's finest work. Artisans and craftspeople are on hand to demonstrate their skills, answer questions and offer their unique art for sale. Live Country & Bluegrass entertainment. Open 10 a.m. to 6 p.m. daily, Sunday 10 a.m. to 5 p.m. Call (865) 436-7479 or visit [www.craftsmenfair.com](http://www.craftsmenfair.com) for details.

**August 24 - 28**  
**Smoky Mountains Songwriters Festival** – Celebrating the area's Appalachian musical roots, Gatlinburg hosts its fourth Smoky Mountains Songwriters Festival. For more information, visit [www.smswf.com](http://www.smswf.com).



**September 9 - October 31**  
**Smoky Mountain Harvest Festival** – A countywide celebration of harvest season features festivals, special events and autumn-themed displays.

**September 15**  
**19th Annual Taste of Autumn** – Sample signature dishes from the area's finest restaurants and other vendors. Enjoy live entertainment with a cash bar. Proceeds benefit United Way of Sevier County. Doors of the Gatlinburg Convention Center open at 5 p.m.

**September 24 & 25**  
**Smoky Mountain Trout Tournament** – The 17th Annual Fall Smoky Mountain Trout Tournament is open to adults or children – and equally challenging for both visitors and locals. All Gatlinburg and state fishing regulations will be observed. For information, call 661-3474, visit [www.rockytopoutfitter.com](http://www.rockytopoutfitter.com), or email [rockytopoutfit@aol.com](mailto:rockytopoutfit@aol.com)

**September 23 – October 30**  
**Oktoberfest** – This Ober Gatlinburg festival features Bavarian-style food, bier garden, music and live entertainment through early November, with daily shows and multiple shows each Friday, Saturday and Sunday. Call (865) 436-5423 for more information.

**October Weekends**  
**Ripley's Fright Nights** – Ripley's Haunted Adventure celebrates its 18th annual Fright Nights with a special

"Experiment in Terror" show each weekend in October, with no extra charge every Friday, Saturday, and Sunday evening plus Halloween night. Call 430-9991 for more information.



**October 6 - 23**  
**Gatlinburg Craftsmen's Fair** – Art, crafts and music lovers will find over 200 booths featuring some of the nation's finest work. Artisans and craftspeople are on hand to demonstrate their skill, answer questions and offer their unique art for sale. Enjoy live country & bluegrass entertainment at the Gatlinburg Convention Center. Call (865) 436-7479 or visit [www.craftsmenfair.com](http://www.craftsmenfair.com)

**October 31**  
**Trick Or Treat Kickoff Carnival** – Local businesses offer contests, costumed characters, inflatables and candy on Halloween at Ripley's Aquarium of the Smokies Plaza. Proceeds benefit the United Way of Sevier County.

**October 1 - 31**  
**Shocktober** – At the Gatlinburg Space Needle, enjoy all things Halloween. Spend an evening at The Captured, the areas premier live escape experience. And, be sure to catch our special Shocktober Show: Impossibilities Presents - Wicked Things performed nightly in the Iris Theater. Visit [www.shocktober.com](http://www.shocktober.com) for details.

**November 9**  
**Gatlinburg Winter Magic Kickoff and Chili Cookoff** – The City of Gatlinburg kicks off Gatlinburg Winter Magic from 5 to 8 p.m. on the Downtown Parkway by turning on over three million lights. Enjoy live entertainment, sample chili recipes from local restaurants and businesses and vote for your favorite.

**November 9**  
**Gatlinburg Winter Magic Trolley Ride of Lights** – Enjoy a guided trolley tour of Gatlinburg Winter Magic lighting displays. Departure is from the Ripley's Aquarium Trolley Station. Trolley leaves at 6:30, 7:30 and 8:30. Group reservations are available. Book your seats on-line by visiting [www.gatlinburg.com/events](http://www.gatlinburg.com/events)



November 9

**Gatlinburg Winter Magic** – The City of Gatlinburg magically lights up the winter nights with dozens of spectacular light displays, featuring all LED bulbs.

November 11

**Veterans Day Celebration** – Join the City of Gatlinburg in saluting the men and women of America who have served in our Armed Forces in this special ceremony on Ripley's Aquarium Plaza. This 16th annual program begins at 11 a.m. and includes stirring musical tributes, ceremonial words and recognition of Veterans in attendance. This event is designated an official Regional Site for the Observance of Veterans Day by the Veterans Day National Committee, U.S. Department of Veterans Affairs.

November 22 - 27

**Great Smoky Arts & Crafts Community Thanksgiving Show** – Unique handcrafted gifts made by members of Great Smoky Arts & Crafts Community are offered as they host their annual show at the Gatlinburg Convention Center. Visit [www.gatlinburgcrafts.com](http://www.gatlinburgcrafts.com)



November 22 - 27

**Gatlinburg's Festival of Trees** – Dozens upon dozens of ornately decorated Christmas trees await visitors in this winter wonderland at Gatlinburg Convention Center's W.L. Mills Conference Center. Presented by Gatlinburg Hilton Garden Inn, the event benefits Boys and Girls Club of the Smoky Mountains.



November 24 - December 16  
**Winter Magic Tunes & Tales** – This holiday season, visitors can meet characters and storytellers and enjoy caroling along the Parkway Friday and Saturday evenings during this annual event!

November 28 - December 4

**Great Smoky Arts & Crafts Community Holiday Show** – Unique handcrafted gifts made by members of Great Smoky Arts & Crafts Community are offered as they host their annual holiday show at the Gatlinburg Convention Center. Visit [www.gatlinburgcrafts.com](http://www.gatlinburgcrafts.com)

November 25 & 26

**The Nutcracker "Sweet"** – Presented by the Smoky Mountain Dance Theater Company, enjoy this holiday classic with performances at 7 p.m. in the W.L. Mills Auditorium. Call (865) 680-7369 for ticket information.

December 1 - 31

**Gatlinburg Winter Magic** – The City of Gatlinburg magically lights up the winter nights with dozens of spectacular light displays, featuring all LED bulbs.

December 1 - 30

**Gatlinburg Winter Magic Trolley Ride of Lights** – Enjoy a guided trolley tour of Gatlinburg Winter Magic lighting displays. Departure is from the Ripley's Aquarium Trolley Station. Trolley leaves at 6:30, 7:30 and 8:30. Excludes December 5, 24, 25, 31. Group reservations are available. Book your seats on-line by visiting [www.gatlinburg.com/events](http://www.gatlinburg.com/events)

December 2

**41st Annual Fantasy of Lights**

**Christmas Parade** – This popular Christmas parade in downtown Gatlinburg is recognized as one of the Top 20 Events in the Southeast. Parade features lighted floats, marching bands, equestrian units and balloons. Parade begins at 7:30 p.m.

December 3 & 4

**Christmas on Ice** – Enjoy the spirit of the season as local skaters display their talents on ice to the sounds of holiday music in a two-day performance at Ober Gatlinburg's ice arena. Visit [www.obergatlinburg.com](http://www.obergatlinburg.com)

December 31

**New Year's Eve Fireworks Show & Ball Drop** – On Historic Nature Trail at the Parkway. For the 28th straight year, the Space Needle area at traffic light #8 comes alive at the stroke of midnight with a fabulous fireworks show. Features live entertainment. "Best New Year's Eve Show in the South."

**2017**

January 1 - February 29

**Gatlinburg Winter Magic** – The City of Gatlinburg magically lights up the winter nights with dozens of spectacular light displays, featuring all LED bulbs.

January 7, 14, 21, 28

**Gatlinburg Winter Magic Trolley Ride of Lights** – On Saturdays in January, enjoy a guided trolley tour of Gatlinburg Winter Magic lighting displays. Departure is from the Ripley's Aquarium Trolley Station. Trolley leaves at 6:30, 7:30 and 8:30. Book your seats on-line by visiting [www.gatlinburg.com/events](http://www.gatlinburg.com/events)

January 29 - 31

**Tennessee Winter Special Olympics** – Winter sports competitions including ice skating, snowboarding and snow skiing at Ober Gatlinburg. Opening ceremonies are held at W.L. Mills Auditorium. (800) 251-9202

March TBD

**Gatlinburg Improv Fest** – This event for both performers and spectators at Sweet Fanny Adams Theatre will feature a number of improvisation groups and instructors participating in a series of shows and classes. For information, visit [www.gatlinburgimprovfest.net](http://www.gatlinburgimprovfest.net), email [gatlinburgimprovfest@gmail.com](mailto:gatlinburgimprovfest@gmail.com) or call (865) 325-9712.

March 17 - June 2

**Gatlinburg Smoky Mountain Spring: It's a Spring Thing!** – As part of Smoky Mountain Springfest, it's a Gatlinburg and county-wide celebration of the season featuring special events, local craft shows and much more.

April 12 - 15

**Great Smoky Easter Arts & Crafts Show** – Unique handcrafted gifts and products produced by members of Great Smoky Arts & Crafts Community are placed on display and offered for sale as they host their annual show at the Gatlinburg Convention Center. For information, visit [www.gatlinburgcrafts.com](http://www.gatlinburgcrafts.com)

April 16

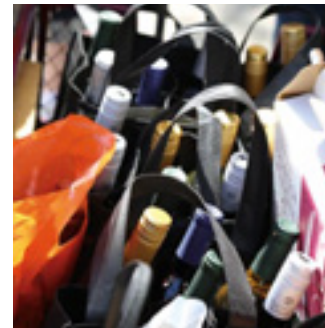
**Easter Sunrise Service at Ober Gatlinburg** – Early morning Easter Service at Ober Gatlinburg includes complimentary tram service to the top of the resort beginning at 5:45 a.m. Service begins at 6:30 a.m. Breakfast buffet available. (800) 251-9202

April 1 & 2

**Smoky Mountain Trout Tournament** – The 18th Annual Spring Smoky Mountain Trout Tournament is open to adults or children – and equally challenging for both visitors and locals. All Gatlinburg and state fishing regulations will be observed. For more information, call 865-661-3474, visit [www.rockytopoutfitter.com](http://www.rockytopoutfitter.com), or email [rockytopoutfit@aol.com](mailto:rockytopoutfit@aol.com)

April 6 - 9

**2017 Spring Art Experience** – Arrowmont will showcase the history, heritage and success of the Pi Beta Phi and Arrowmont partnership. Music, storytelling, craft workshops and plenty of time for fellowship and good food are part of the weekend experience. For more information call 865-436-5860 or visit [www.arrowmont.org](http://www.arrowmont.org)



April 7

**Gatlinburg Wine Tour** – Jump-start Wine Fest Weekend by taking a private tour of Gatlinburg wineries. The guided tour begins with a private reception and wine tasting. Participants will have the opportunity to win a gift basket during the Wine Fest Weekend inaugural event. Reservations required. (800) 568-4748

April 8

**Smoky Mountain Winefest** – Wineries from across the state will provide samples of their labels along with local chefs preparing food for pairings. Informational demonstrations and seminars will be held. The event will be at Arrowmont School of Arts and Crafts. Tickets are available on line at [www.gatlinburg.com](http://www.gatlinburg.com)



April 7 - 9

**"Hands-On Gatlinburg"** – Experience, create, learn and enjoy! Learn how to make a piece of art or craft from an artist in the Great Smoky Arts and Crafts Community and take it home with you. Visit [www.handsongatlinburg.com](http://www.handsongatlinburg.com) for more information.

April 11 - 15

**67th Annual Spring Wildflower Pilgrimage** – Celebrate and enjoy the beauty of Great Smoky Mountains National Park with over 110 different programs, including hiking tours, motorcades, demonstrations and classroom lectures centered on the flowers, plants and wildlife in the great outdoors. For more information, call (865) 436-7318 ext. 222 or visit [www.springwildflowerpilgrimage.org](http://www.springwildflowerpilgrimage.org)



May 11

**Gatlinburg Beans 'n Cornbread Festival** Presented by Bush Brothers & Company – Gatlinburg celebrates it's Appalachian culinary past with a festive, fun-filled Beans n' Cornbread cook off, complete with foot-stompin' mountain music, fun and games, and, of course, lots of Beans and Cornbread. The festival is in downtown Gatlinburg from 4 - 8 PM. Visitors can sample all the different recipes while supplies last.

May 19

**Arrowmont's 7th Annual Shine, Wine & Dine** – This event is a significant fundraiser for the arts and crafts school and is designed to be an evening of fun and fine art with artwork generously donated by regional and national artists, great wines and unique event packages. For more information, call (865) 436-5860.

June 9 – July 29

**Smoky Mountain Tunes and Tales** – All summer long visitors can meet characters, hear mountain music and learn about life long ago in the Smokies on the streets of Gatlinburg. Storytellers, musicians and cloggers perform along the Parkway every evening during this ninth annual event!

**\*Special Note:** As this calendar is produced up to a year in advance, dates and locations are subject to change. For full details on any Gatlinburg event, please call 800-568-4748, 865-436-4178 or visit the Special Events website at [gatlinburg.com/events](http://gatlinburg.com/events)



July 3

**4th of July Midnight Parade** – This 42nd annual showcase salutes the valiant men and women of our military services in the "First July Fourth Parade in the Nation!" Parade starts at the stroke of midnight to begin Independence Day. Floats, balloons, and marching bands pay tribute to our country during this Southeast Tourism Society Top 20 Event.

July 4

**River Raft Regatta** – Visitors can enjoy a fun, unmanned, floatable object race for the whole family. Free registration begins at 10 a.m. at bridge beneath chair lift on River Road. Race begins at noon at Christ of the Smokies bridge and ends at Ripley's Aquarium of the Smokies bridge where prizes will be awarded in several different categories.

July 4

**4th of July Fireworks Show** – Join the celebration in downtown Gatlinburg to mark our nation's "Independence Day" with a magnificent fireworks show. The City of Gatlinburg lights up the mountain skyline downtown at 10 p.m. with this grand display. Designated a Top 20 event by Southeast Tourism Society.



## GATLINBURG'S MOST ORIGINAL MINI-GOLF

# INTERACTIVE

## Two Amazing Courses

With the Great Smoky Mountains as the backdrop, TWO beautifully landscaped, 18-hole courses will amaze and delight you with animated and interactive displays throughout. See raccoons, bears, chipmunks, possums, skunks, and even some heckling crows.

The themed course replicates the "old days" when a Tennessee hero named Davy Crockett roamed "them thar hills". You will find some of the world's most original golf holes, complete with steep drops, splits, over and under ramps, lots of water, and even a hillbilly outhouse that flushes when your putt is right on target.



Ripley's and Ripley's Davy Crockett Mini Golf are registered trademarks of Ripley Entertainment Inc.



**(865) 430-8851**

**On the Parkway**  
at traffic light #1

**Park Free at the course or**  
ride the trolley

Open year round, weather permitting

[www.ripleysgatlinburg.com](http://www.ripleysgatlinburg.com)  
Email: [gatlinburg@ripleys.com](mailto:gatlinburg@ripleys.com)

MAP LOCATION – #1





## EXTREME FUN IN THE AREA'S WILDEST MOTION Simulator

**C**ome experience the most intense motion simulator in Gatlinburg! Survive Smash Factory – a wild and crazy drive through a crash-test dummy facility or strap into the Astro Canyon Coaster, a rollercoaster out of this world.

Hold on tight as you ride the 12 seat Venturer Motion Simulator offering SIX action-packed movies that make you feel like you are actually there!

Now Showing: *Smash Factory*, *Astro Canyon Coaster*, *Volcano Mine Ride*, *Slot Car Boogie*, *Glacier Run*, and *The Big One*.

MAP LOCATION – #16

VENTURER

**MOTION  
R.I.D.E.**

*Movie Theater*

(865) 436-2326

716 Parkway  
at Reagan Terrace Mall,  
adjacent to Fort Fun.

[www.smokymountainfun.com](http://www.smokymountainfun.com)



Recognized by ConventionSouth Magazine as a **Green Meeting Space**, the **Gatlinburg Convention Center** is the ideal place to host meetings, conventions and events. The adjacent **Mills Conference Center** provides a sparkling ballroom for banquets and other special occasions. With 148,000 square feet of flexible meeting space, the professional staff will help you plan successful events for groups of 60 to 6,000. Conveniently located in the heart of Gatlinburg, the Center is within walking distance of restaurants, attractions, shopping and lodging. For more information, visit: [www.meetings.gatlinburg.com](http://www.meetings.gatlinburg.com)



## GATLINBURG'S OLDEST AND SCARIEST HAUNTED HOUSE

Scaring  
Smoky Mountain  
Visitors For Over  
35 Years!

**E**mbrace Your Fear in Gatlinburg's most exciting attraction! Explore three stories of terrifying fun in this classic "turn of the century" Haunted Mansion...searching...for...a way...OUT!

If you dare to step inside this once grand abode you shall take an **unguided** tour finding your way through secret passageways, eerie dark corridors, winding staircases and spine chilling chambers that will curdle the blood of even the bravest of souls! But **BEWARE!** You never know what restless, rotting residents might be lurking around the corner in each foreboding room ahead ... or **BEHIND YOU!** Join us and release your screams in Gatlinburg's **Original Haunted House** . . . **IF YOU DARE!**

**MYSTERIOUS  
MANSION**

**IF YOU DARE!**

(865) 436-7007

424 River Road

[GatlinburgsMysteriousMansion.com](http://GatlinburgsMysteriousMansion.com)

To find us...Walk behind McDonald's through Fountain Plaza and down to River Road or just a short walk along the river from the Aquarium.

MAP LOCATION – #18

Frightfully yours,







THE IRIS THEATER PRESENTS ...

# IMPOSSIBILITIES *Magic, Mindreading and Mayhem!*



**G**atlinburg is now the home of the critically acclaimed show *Impossibilities – Magic, Mindreading and Mayhem!* starring the Magical Comedian Chris Collins and Master Mentalist Erik Dobell playing at the newly renovated Iris Theater located at the base of the Iconic Gatlinburg Space Needle.

**The Magical Comedian Chris Collins** – Chris Collins is not your stereotypical Magician. His ability to blend audience participation with award-winning magic and laugh-out-loud comedy has earned him the title of the Magical Comedian, making Chris one of the most unique entertainers performing today.

**The Master Mentalist Erik Dobell** – Erik Dobell can read minds...really! This is because Erik Dobell is a Mentalist. Erik has travelled the world thanks to his uncanny ability to know what's going on inside of people's heads and by performing impossible psychokinetic feats. You may have seen it all but you haven't seen Erik Dobell.

Chris Collins and Erik Dobell have travelled the world from Las Vegas to South Korea and performed for audiences such as the NFL, Sony Electronics and Carnival Cruise Lines. You may have also seen them on NBC, Fox and America's Got Talent; and now you can see their amazing show nightly at the Iris Theater.



(888) 482-3330

115 Historic Nature Trail  
(at the Space Needle – light #8)

Open Year Round

[www.IrisTheater.com](http://www.IrisTheater.com)

MAP LOCATION – #23



## IF YOU DARE - EXPLORE YOUR NIGHTMARE! *You're never alone in the dark!*

**I**n 1999, Ripley's acquired property once known as the Grimsby & Streaper Casket Company. Although advised by locals that unnatural things went on inside, Ripley's began conducting tours of the former casket factory until decisions were made on how to better utilize this valuable location.

Now is your chance to visit the factory closed permanently in 1926 due to the strange disappearance of both company owners. **Enter at your own risk!**

Start your tour with our world famous incline. Ripley's Haunted Adventure is the only Haunted House in Tennessee open 365 days a year.

State-of-the-art Animatronics  
and Special Effects.  
Live Actors.



**Ripley's**  
**HAUNTED**  
**ADVENTURE®**

© Ripley Entertainment Inc.

(865) 430-9991

On the Parkway (Light #8)  
[www.ripleysgatlinburg.com](http://www.ripleysgatlinburg.com)

Email: [gatlinburg@ripleys.com](mailto:gatlinburg@ripleys.com)

Open year round.

MAP LOCATION – #26

Must be  
6 years or  
older to  
enter.





## FAMILY FRIENDLY OUTDOOR ADVENTURE

# RAFTING

## Ziplining Ropes Course

**O**ne day here makes a lifetime of memories! From high in the treetops or down in the rapids, get ready for an action-packed outdoor adventure! With everything from wild to mild, it's family friendly fun for all ages!

### RESERVE NOW!

- No experience needed
- Whitewater rafting and family float options
- Professionally guided
- 10-acre Family Adventure Island with playground, nature trail and picnic area
- Safe and affordable zipline course and ropes challenge course
- Short, scenic drive from the city
- And much more!



Call for reservations or information.  
**800-PRO RAFT**  
800-776-7238

Reservation & Ticket Office:  
**813 East Parkway**  
(Hwy 321 North)  
[www.raftinginthesmokies.com](http://www.raftinginthesmokies.com)

MAP LOCATION - #3



## THE SUPER POWER OF ENTERTAINMENT

# EXCITEMENT

## The Family Playground



**B**elow the Gatlinburg Space Needle you will enjoy Arcadia, a 25,000 square foot Family Entertainment Complex with a variety of the latest amusements and games.

With over 100 games, you can **Play, Win, and Eat** all day in this super-sized arcade – with the area's biggest prize center.

For hours of entertainment, there's **The Captured – A Live Escape Experience**, the IRIS Theater's **"Impossibilities – An Evening of Magic, Mindreading and Mayhem!"**, Souvenir Gift Store, Slice Pizza Bakery, and much more.

*Save your tickets for bigger prizes. They never expire!*



**WIN BIG.**

**(865) 436-5650**  
**115 Historic Nature Trail**  
at Traffic Light #8  
across from the Convention Center  
[www.gatlinburgarcade.com](http://www.gatlinburgarcade.com)

MAP LOCATION - #23





## Download the Official Gatlinburg app

Visiting Gatlinburg, Tennessee? Need a handy app to get around and find all the cool things to do in town? Download the Official Gatlinburg app brought to you by the Gatlinburg Convention and Visitors Bureau.

Our **FREE** app has mountains of information: Learn about special events and festivals, attractions and outdoor adventure, our unique restaurants, places to stay, maps and much more!

- Search hotels, restaurants, attractions and events based on your location
- Locate places of interest with the "Map it" feature
- Share information via Social Media
- Find out *What's New in Gatlinburg*
- Go to: [gatlinburg.com/app](http://gatlinburg.com/app)

## GATLINBURG GOLF COURSE



As challenging as it is beautiful, Gatlinburg's Golf Course features one of the most dramatic golf holes in America known as "Sky Hi." With a vertical drop of 200 feet from tee to green, golfers say the 12th Hole and the scenic beauty of the course is the reason they keep coming back year after year! The 18-hole professional course is located 6 miles from downtown Gatlinburg on Dollywood Lane in Pigeon Forge. Call (865) 453-3912 for tee times or book online at [golf.gatlinburg.com](http://golf.gatlinburg.com).



## VISIT THE #1 SCENIC OVERLOOK! SEE IT ALL! The Best Seat in Gatlinburg!

**A** ride on the Sky Lift is your gateway to experiencing breathtaking views of the Smoky Mountains. Enjoyable and accessible for all ages, hop on as the chairlift gently glides over the Little Pigeon River and soars to Gatlinburg's #1 scenic overlook high atop Crockett Mountain. This vantage point for taking in sights of the Smokies is unlike any other in the region!

Discover a gift shop featuring unique keepsake items, as well as a snack shop, picnic area and open space for you to relax while surrounded by the area's natural beauty. Remember to smile as your picture is taken on the ride up with the Smoky Mountains as the backdrop. Your photo can be purchased at the gift shop.

After sunset, the Sky Lift's path to the top is lighted and provides an entirely different experience. The glittering lights of Gatlinburg and silhouetted peaks seen from high up on the mountain remind you that you are visiting a quaint and very special destination.

The equally fun part of the Sky Lift experience is the ride back to the bottom. Whether visiting when the lush green of the spring and summer is on display, or when the vibrant array of color is popping during the fall season, the views as you glide down are also spectacular.



**It's a ride you'll long remember . . . a view you'll never forget.**



## SKYLIFT GATLINBURG

**(865) 436-4307**

On the Parkway at Maple Lane  
(between traffic lights #6 and #8)

Email: [info@gatlinburgskylift.com](mailto:info@gatlinburgskylift.com)

[www.gatlinburgskylift.com](http://www.gatlinburgskylift.com)

Open year-round and until 11 p.m.  
during the summer season!

MAP LOCATION - #17





## THE LARGEST EXHIBITION OF ACTION-PACKED ILLUSIONS

See the action...  
Feel the  
*Excitement*



You'll be amazed with the endless collection of grand illusions, mystifying magic and interactive exhibits.

**M**ake your friends **DISAPPEAR** and re-appear at your command! Stop a tornado with the wave of your hand! See Merlin the Wizard levitate right before your eyes! Join Ali Baba's Genie who is trapped inside a glass bottle!

## WORLD OF ILLUSIONS

(865) 436-9701

**On the Parkway**

Next to Reagan Terrace Mall  
in the heart of  
Gatlinburg's Shopping District.  
Open Every Day.

MAP LOCATION - #13



**A LIVE ESCAPE EXPERIENCE . . .**

## THE CAPTURED



**T**he Captured is Gatlinburg's first live escape game experience (a game in which people are locked in a room with other participants and have to use elements of the room to solve a series of puzzles, find clues, and escape). The Captured is a horror-themed series of escape experiences, located below the Gatlinburg Space Needle.

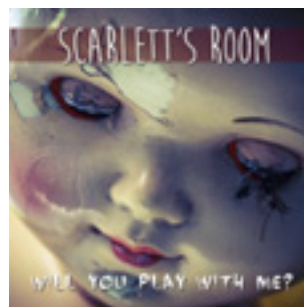
### Chapter One: The Cellar.

You have just unwittingly entered the Craft Manor cellar. You have 60 minutes to escape before Mr. Craft's return. You will have to use your intellect, skill, and every bit of courage to escape becoming the evening's main course.

**Chapter Two: Scarlett's Room.** Scarlett Craft, Sebastian's twisted sibling is quite different from the rest of her family. This serial killer, oblivious to her actions, is host to multiple personalities. Escape Scarlett's room in 60 minutes or you'll become her next "broken toy."

*The Captured is the top rated thing to do in "fun and games" on TripAdvisor.*

**HeadCase – Escape Adventures**, our sister company, is opening six additional escape experiences next door in Summer 2016. Now open, Aztec Tomb, Goliath, and Doomsday. Visit us at [HeadCaseAdventures.com](http://HeadCaseAdventures.com)



**THE CAPTURED**  
A LIVE ESCAPE EXPERIENCE

(865) 430-7844

112 Reagan Drive  
[www.TheCaptured.com](http://www.TheCaptured.com)

MAP LOCATION - #21



## **NINE ACTIVITIES FOR ONE LOW PRICE!** **FAMILY FUN** All in *ONE Place!*

**F**ort Fun is the place to be for families looking for exciting attractions in the heart of Gatlinburg. We offer NINE activities for ONE LOW PRICE!

We feature TWO serene, award-winning miniature golf courses located on a beautiful, landscaped hillside. Fort Fun also offers the unique experience of playing miniature golf under the sea with the Indoor BlackLight Golf Course.

Test your skills at Gatlinburg's largest Laser Tag arena! With a 3,000 square foot arena, featuring interactive sentry pods and home bases, you will find out who the sharpshooters are in your group!

Bounce your way around our electric bumper car arena! Fun for all ages, bump and bash your family and friends, all in good fun of course!

Come experience the most intense motion ride in Gatlinburg! Hold on tight as you ride the 12 seat Venturer Motion Simulator offering SIX action-packed movies!

To top it all off, pan for gems like old-timey miners with our souvenir activity: Gem Mining – 15-17 gem stones guaranteed in every bag!

**GREAT  
DO IT ALL PASS  
VALUE**

[www.smokymountainfun.com](http://www.smokymountainfun.com)



**(865) 436-BEAM**

**716 Parkway**

at Reagan Terrace Mall, adjacent to  
Old Gatlinburg Golf & Games

**Open 10 am Daily**

MAP LOCATION – #15



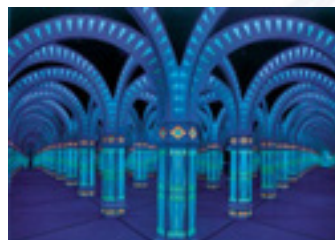
## **STATE-OF-THE-ART LIGHT & SOUND SHOW** **GET LOST HERE!**<sup>TM</sup>

**D**on't miss a trip through the Amazing Mirror Maze, the hottest attraction on the Parkway! You won't believe your eyes when you experience the exhilarating state-of-the-art light and sound show.



*It's fun for all ages  
and you'll want to do  
it again and again!*

**AMAZING  
MIRROR MAZE**



**(865) 436-4415**  
919 Parkway (Light #8)  
**Open year round.**

MAP LOCATION – #28





## 3 CHALLENGING COURSES MINI GOLF *Inside & Out*



takes you UNDER THE SEA as you play amidst dolphins, mermaids, and various other aquatic life. There may even be a pirate ship with sunken treasure! Play this beautiful,

**C**ome play a timeless game in a timeless place! Old Gatlinburg Golf and Games is the area's largest miniature golf destination – offering 45 holes of fun!

Our TWO award-winning outdoor miniature golf courses are set on a unique, serene hillside. Travel back in time and learn about Gatlinburg's history as each hole tells you the story of the area's first settlers and fascinating past.

We also offer the newest craze in miniature golf with our indoor BlackLight Golf Course. This course takes you UNDER THE SEA as you play amidst dolphins, mermaids, and various other aquatic life. There may even be a pirate ship with sunken treasure! Play this beautiful, brightly colored course and challenge your family and friends to a unique miniature golf experience.



**Offering  
UNLIMITED  
Golf Packages**

[www.smokymountainfun.com](http://www.smokymountainfun.com)



*Play the Timeless Game in a Timeless Place!*  
MINIATURE GOLF COURSE

**(865) 430-GOLF**  
**716 Parkway**  
at Reagan Terrace Mall,  
adjacent to Fort Fun.

Open 10 am Daily

MAP LOCATION – #14

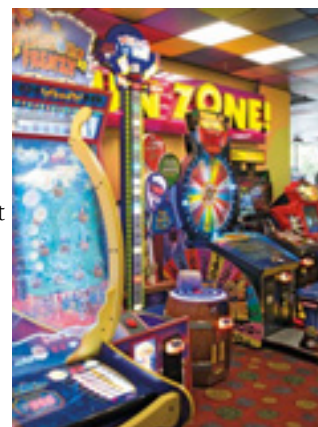


## FAMILIES COME FOR THE FUN ARCADE

**I**f it's hi-tech family amusements you're seeking, Ripley's Super Fun Zone has it right in the heart of the Great Smoky Mountains.

You'll find a wide selection of prize games and some of the hottest, state-of-the-art video games in the area. Plus, relive your childhood in the Candy Factory, a colorful and spectacular candy store with a wide variety of treats for everyone's sweet tooth.

Ripley's Super Fun Zone is quality, family-oriented entertainment you have come to expect at Ripley's.



**Ripley's®**  
**SUPER  
FUN  
ZONE!**

© Ripley Entertainment Inc.

**(865) 436-5096**

**On the Parkway**  
(Just before Light #8)

next to Ripley's Believe It or Not! Museum

[www.ripleysgatlinburg.com](http://www.ripleysgatlinburg.com)  
Email: [gatlinburg@ripleys.com](mailto:gatlinburg@ripleys.com)

MAP LOCATION – #20



[www.attractions-gatlinburg.com](http://www.attractions-gatlinburg.com)



# GATLINBURG ARTS & CRAFTS

Visit the historic Great Smoky Arts & Crafts Community, which has been designated a historic pathway on the Tennessee Arts & Crafts Trail by the governor of Tennessee. It is the largest group of independent artisans in North America. Since its inception in 1937, the Great Smoky Arts & Crafts Community has grown to encompass more than 120 studios, galleries and shops, as well as restaurants, cafes and a tearoom,

in its eight-mile loop, located three miles east of downtown Gatlinburg along East Parkway (Hwy 321 North). Visit their website:

[www.gatlinburgcrafts.com](http://www.gatlinburgcrafts.com)



Back by popular demand, Gatlinburg's 11th annual presentation of Smoky Mountain Tunes & Tales begins nightly performances on the Parkway in downtown Gatlinburg on June 10th,

continuing daily through July 31st. A dulcimer player gracefully strums an upbeat mountain melody. A clogging group demonstrates the original dance of the Appalachians. A bluegrass band draws a crowd at The Village, and storytellers share tall-tales of folklore in the Smokies. These are just a few of the many performances visitors to Gatlinburg will experience every night this summer. Winter Magic Tunes & Tales will perform on Fridays and Saturdays from November 25 to December 17. Tunes & Tales features costumed musical performers, storytellers and artisans portraying various time periods from the 1800s to today.



## A WONDERFUL FAMILY EXPERIENCE PENGUINS Interactive Habitat!



Enjoy this playful colony of Blackfooted penguins in their state-of-the-art indoor/outdoor habitat.

View penguins from above and below the water in this unique and interactive exhibit.

Experience being in the water with penguins, without getting wet, as you crawl through clear underwater tunnels. Pop up on the penguins' private beach and get nose-to-beak. Reserve a

Penguin Experience or Penguin Painting Experience to get up-close with one of the playful penguins!

**Voted by USA Today Travel 10 Best List as one of the best places to see penguins in the world!**



© Ripley Entertainment Inc.

**(888) 240-1358**

**On the Parkway**

(at Ripley's Aquarium of the Smokies - Light #5)

Email: [aquariumofthesmokies@ripleys.com](mailto:aquariumofthesmokies@ripleys.com)  
[www.ripleysaquariumofthesmokies.com](http://www.ripleysaquariumofthesmokies.com)

**Open Year Round**

MAP LOCATION - #7





**EXPERIENCE THE GREATEST STORY EVER TOLD**

## INSPIRATIONAL

**T**ravel back 2000 years and witness an inspiring portrayal of the life of Christ at Gatlinburg's finest family attraction – Christ Museum and Gardens.

Depicting breathtaking scenes, peopled with over 100 life-sized wax figures in realistic settings, underscored by amazing lighting and special effects, beautiful music and dramatic narrations.

It's as if the pages of a giant-sized biblical picture book were unfolding before your eyes.

The adjoining rotunda houses a priceless collection of biblical coins and precious gems – plus a video presentation of the Old Testament filmed in the Holy Land.

In the patio garden is a monumental sculpture of the head of Christ, so skillfully carved, not only the eyes, but the entire face seems to follow your every move.

Our gift shop features inspirational gifts and collectables.

It is your best hour in the Smokies!



## Christ Museum & Gardens

**(865) 436-5155**

**510 River Road**

(One block from the center of town)

[www.christinthesmokies.com](http://www.christinthesmokies.com)

Open Rain or Shine - Lots of FREE Parking

MAP LOCATION – #19



Christ Museum & Gardens



## RIDE THE INCLINE UNIQUE Up in the Hills Golf



**A**fter a strenuous day in the Smokies or on the streets of Gatlinburg, head for the hills for a relaxing time at Hillbilly Golf.

*It's the world's most unusual miniature golf course.*

Ride the Incline 300 feet straight up to the mountain top above the city. Two challenging 18-hole courses await you. Both are riddled with mountaineer hazards — from outhouses to stills, rocky walls and lush native plants. It's great fun and excitement for the whole family. A truly unique adventure you aren't likely to forget.



## Hillbilly GOLF

**(865) 436-7470**

**On the Parkway  
near Traffic Light #2**

Group Rates and Parking  
are available.

MAP LOCATION – #2







[www.attractions-gatlinburg.com](http://www.attractions-gatlinburg.com)

Visit our website for  
GROUP INFORMATION.

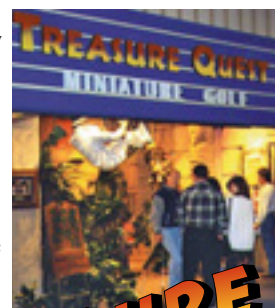


## AN EXCITING INDOOR ADVENTURE GOLFING More than a Game

**T**reasure Quest Golf is a champion-ship 18-hole indoor miniature golf course filled with unusual and spectacular scenes. And, it is the only area golf course that combines both regular and *Amazing Black Light Golf*! It's exciting, challenging and fun for all ages.

An ancient jungle temple is the backdrop to this adventure-packed game of skill. Enjoy it all year round, rain or shine, in the center of downtown Gatlinburg.

Take proper aim, for you know not what may lie ahead in your Treasure Quest Golfing Adventure.

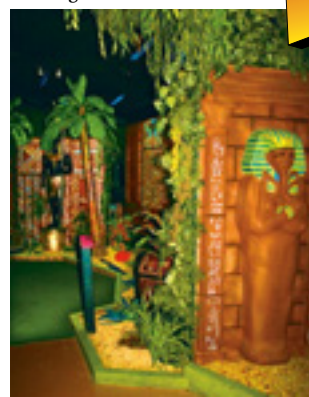


# TREASURE QUEST GOLF™

(865) 436-3972

653 Parkway  
In the center of town next to  
Earthquake, The Ride.

MAP LOCATION - #10





OFFICIAL 2016 - 2017 GUIDE

# GATLINBURG ATTRACTIONS



TripAdvisor's #1 Vacation Destination on the Rise.

## THE MOUNTAINS ARE CALLING

DOWNLOAD OUR APP

SHOPPING  
DINING  
ATTRACTIONS  
TROLLEY MAPS  
AND MORE



[gatlinburg.com/app](http://gatlinburg.com/app)